

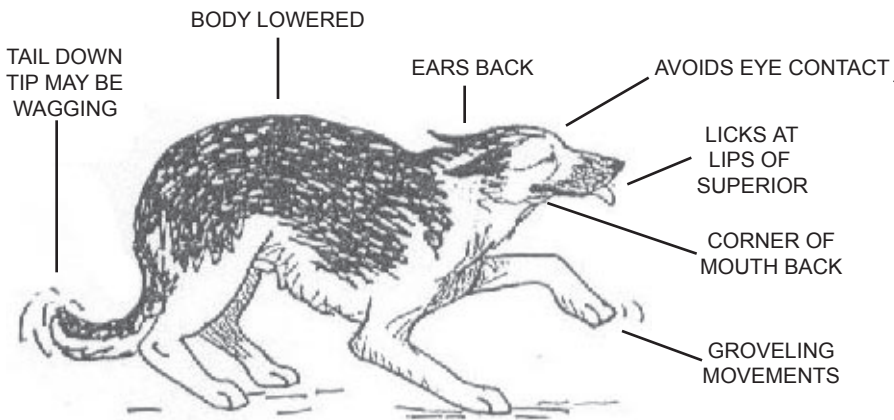
CANINE BODY LANGUAGE

A GUIDE FOR THE DOG OWNER

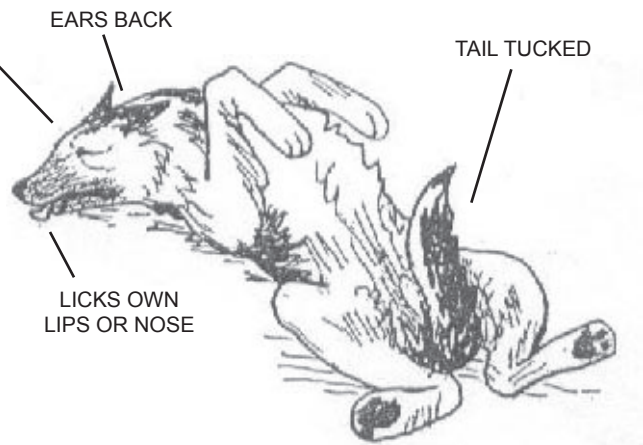
SUBMISSION

MAY URINATE IN EITHER POSITION

ACTIVE

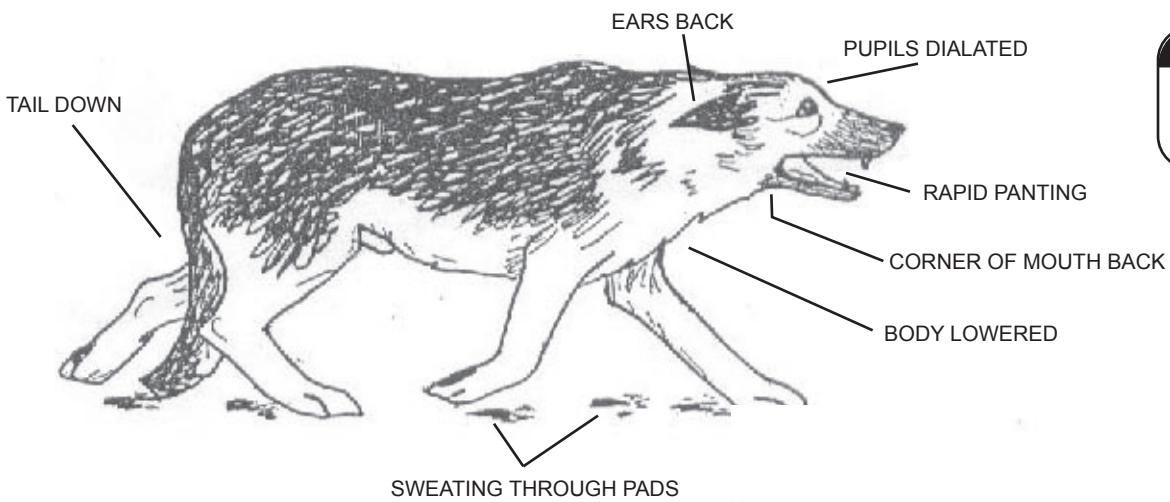


PASSIVE



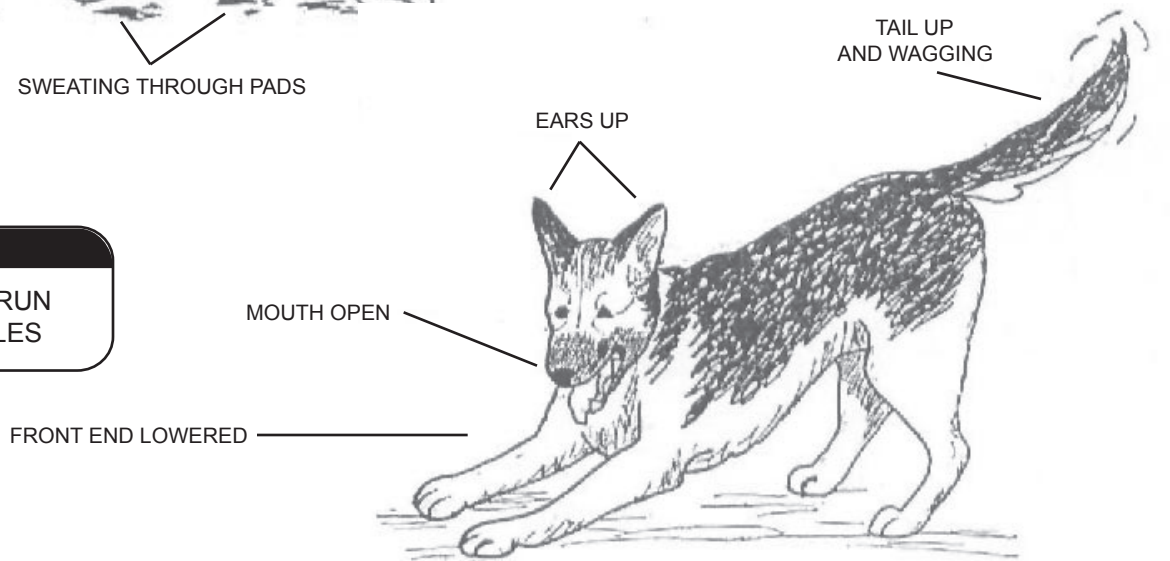
STRESS

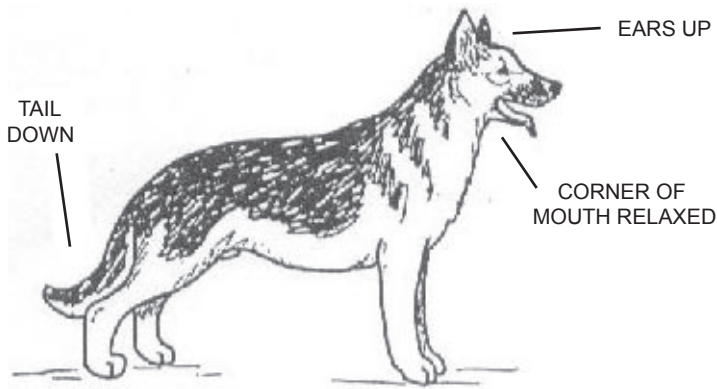
LEARNING STOPS
NEEDS REST



PLAY BOW

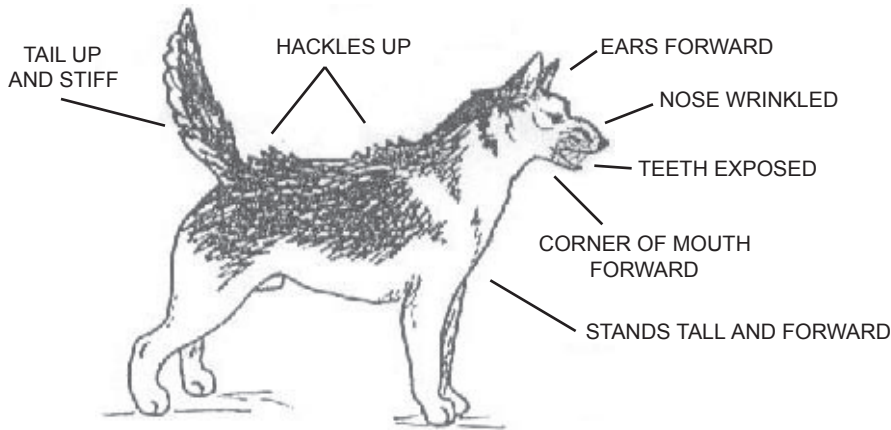
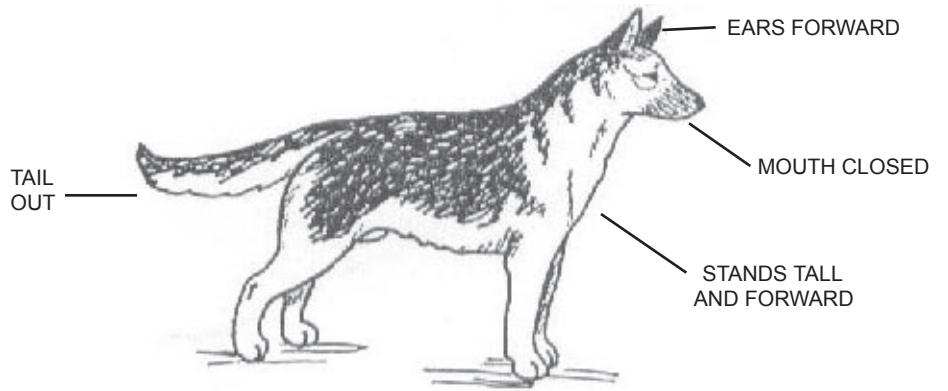
MAY BARK AND RUN
IN SMALL CIRCLES





NEUTRAL OR RELAXED
 MOUTH MAY BE OPEN OR CLOSED.
 MOST COMMON POSITION.

ALERT
 A PRELUDE TO
 ANOTHER BEHAVIOR



OFFENSIVE
 VERY DANGEROUS AND
 AGGRESSIVE. READY TO ATTACK.
 MAY BE GROWLING.

DEFENSIVE
 WILL ATTACK AS LAST RESORT.
 MAY BE GROWLING OR WHINING.

